

**DID YOU KNOW?**

*A decline in water quality could mean a loss of nearly 400 jobs in the Lakes Region, more than anywhere else in NH.*

(Source: NH Lakes Study, 2007)

# Effingham is part of the Ossipee Watershed & Ossipee River Aquifer

*Home of New England's largest stratified drift aquifer.*

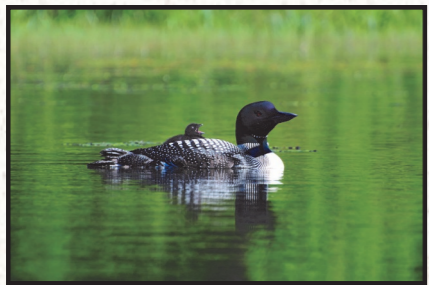
## Property values...



## Tourism...

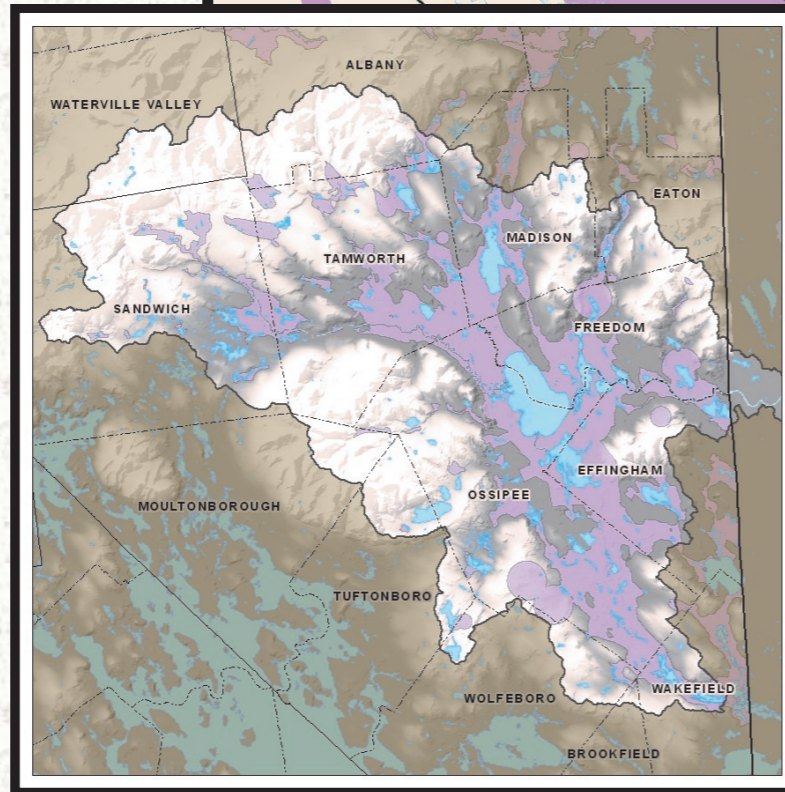
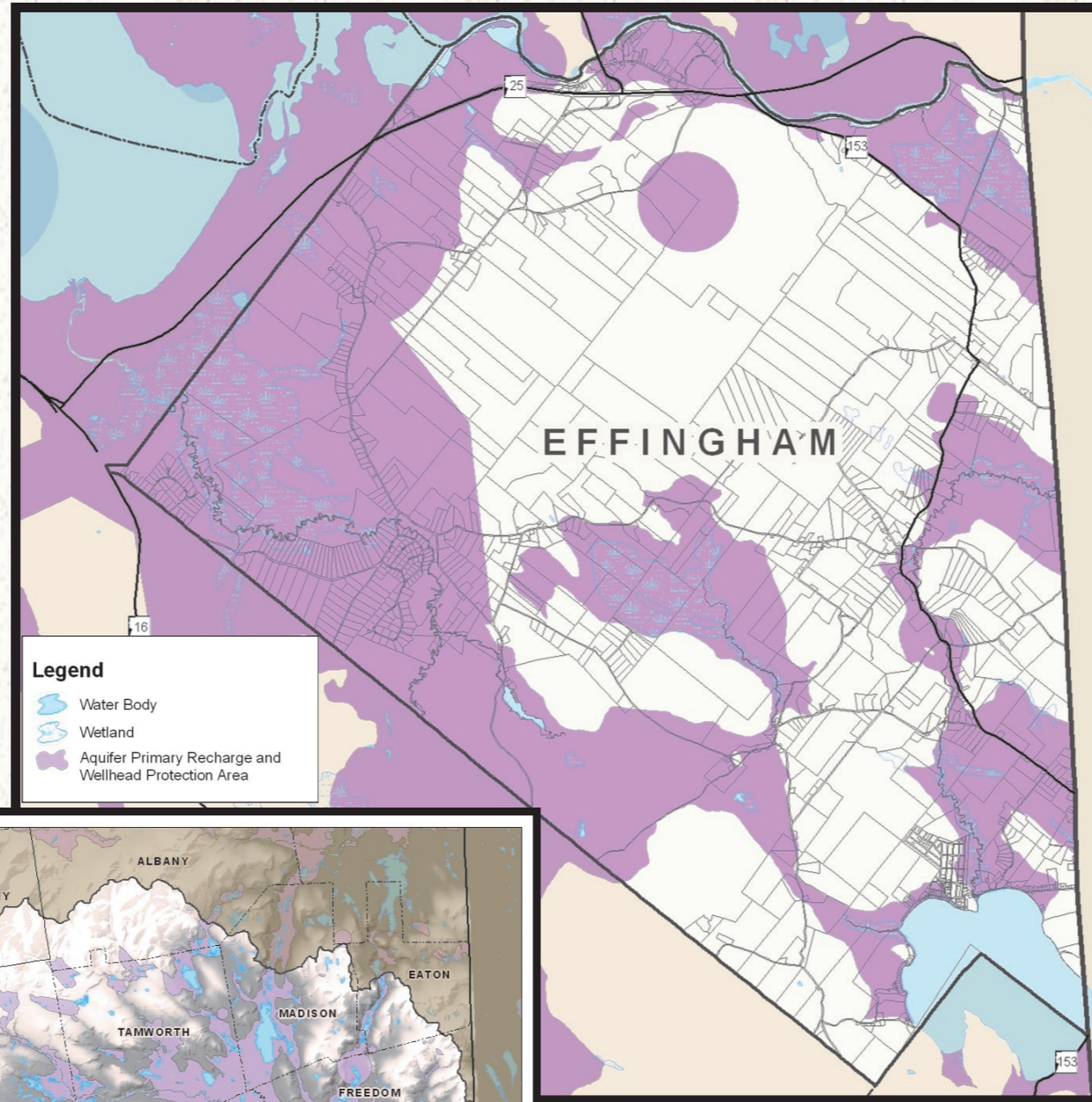


## Recreation...



## Wildlife...

**...all depend upon clean water.**



**JOIN US...**

*in protecting our WATER for current and future generations!*

**"HEALTHY WATER ... HEALTHY COMMUNITIES"**

GREEN MOUNTAIN CONSERVATION GROUP



**Please help and support efforts to protect water in your town.**

Maps created by Lakes Region Planning Commission of geohydrology and water quality of stratified-drift aquifers in the Saco and Ossipee River basins, East-Central New Hampshire, USGS Water-Resources Investigations Report 94-4182.



Lakes Region Planning Commission  
103 Main St. Suite #3  
Meredith NH 03253  
Tel. 603.279.8171  
Fax 603.279.0200  
www.lakesrpc.org



Green Mountain Conservation Group  
PO Box 95  
Effingham, NH 03882  
Tel. 603.539.1859  
Fax 603.539.3525  
www.gmcg.org



Funding for this project was provided in part by a NH DES Local Source Water Protection Grant from the NH Department of Environmental Services.

**DID YOU KNOW?**

*Oil from one car can contaminate 1 million gallons of groundwater.*

(Source: US Environmental Protection Agency)