

ROUND POND

2023 SAMPLING HIGHLIGHTS

Station 1 Deep

Freedom, NH



Water quality data displayed in Tables 1 and 2 are surface water measurements with the exception of the dissolved oxygen data that are collected near the lake bottom. Summary statistics are provided for bi-weekly samples collected between May 16 and October 17, 2023.

Blue = Excellent = Oligotrophic

Yellow = Fair = Mesotrophic

Red = Poor = Eutrophic

Gray = No Data

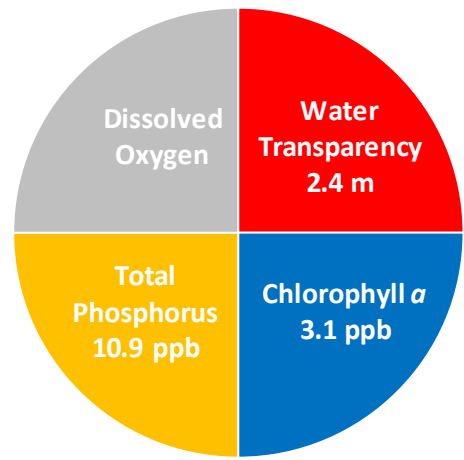


Figure 1. Round Pond Water Quality (2023)

Table 1. 2023 Round Pond Seasonal Averages and NH DES Aquatic Life Nutrient Criteria¹

Parameter	Oligotrophic "Excellent"	Mesotrophic "Fair"	Eutrophic "Poor"	Round Pond Average (range)	Round Pond Classification
Water Clarity (meters)	> 4.0 – 7.0	2.5 - 4.0	< 2.5	2.4 meters (1.4 – 3.8)	Eutrophic
Chlorophyll a ¹ (ppb)	< 3.3	3.3 – 5.0	> 5.0 – 11.0	3.1 ppb (1.3 – 6.2)	Oligotrophic
Total Phosphorus ¹ (ppb)	< 8.0	8.0 – 12.0	> 12.0 – 28.0	10.9 ppb (8.2 – 18.5)	Mesotrophic
Dissolved Oxygen (ppm)	> 5.0 – 7.0	2.0 – 5.0	< 2.0	No Data **	Not Assessed

** Round Pond does not develop a deep water layer that is the basis for the dissolved oxygen classification criteria.

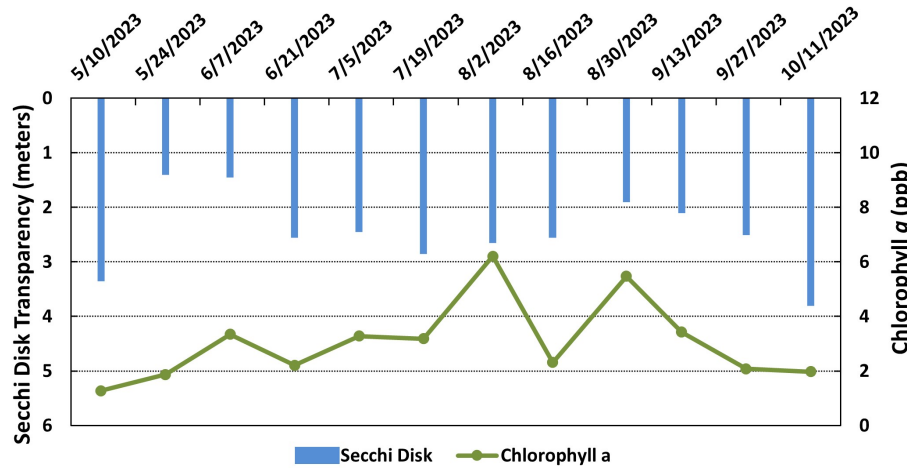
Table 2. 2023 Round Pond Seasonal Average Accessory Water Quality Measurements

Parameter	Assessment Criteria					Round Pond Average (range)	Round Pond Classification
	< 10 uncolored	10 – 20 slightly colored	20 – 40 lightly tea colored	40 – 80 tea colored	> 80 highly colored		
Color (color units)	< 10 uncolored	10 – 20 slightly colored	20 – 40 lightly tea colored	40 – 80 tea colored	> 80 highly colored	25.8 color units (range: 20.0 – 29.5)	Lightly tea colored
Alkalinity (ppm)	< 0.0 acidified	0.1 – 2.0 extremely vulnerable	2.1 – 10 moderately vulnerable	10.1 – 25.0 low vulnerability	> 25.0 not vulnerable	3.9 ppm (range: 3.1 – 5.5)	Moderately vulnerable
pH (std units)	< 5.5 suboptimal for successful growth and reproduction		6.5 – 9.0 optimal range for fish growth and reproduction			6.9 standard units (range: 5.9 – 7.6)	Sufficient for fish growth and reproduction
Specific Conductivity (uS/cm)	< 50 uS/cm Characteristic of minimally impacted NH lakes		50-100 uS/cm Lakes with some human influence	> 100 uS/cm Characteristic of lakes experiencing human disturbances		45.7 uS/cm (range: 38.3 – 50.1)	Characteristic of minimally impacted NH lakes

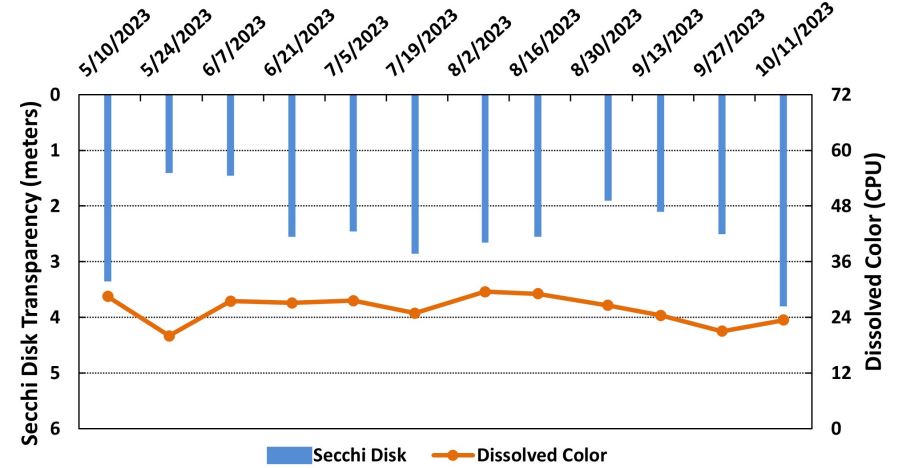
Strategies to stabilize and improve water quality

- Implement Best Management Practices (BMPs) within the Round Pond watershed to minimize the adverse impacts of polluted runoff and erosion into Round Pond. Refer to [Landscaping at the Water's Edge: An Ecological Approach](#), [New Hampshire Homeowner's Guide to Stormwater Management: Do-it-yourself Stormwater Solutions for Your Home](#), and the [Green Mountain Conservation Group BMP page](#) for more information on how to reduce nutrient loading caused by overland run-off. NH Lakes also provides a series of resources aimed at educating residents and protecting our lakes and ponds through the [LakeSmart](#) program.

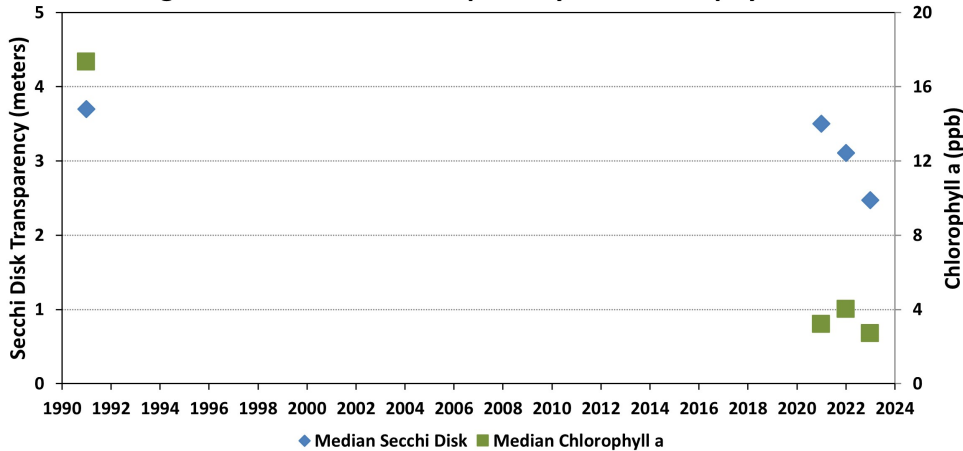
**Figure 2. Round Pond (2023 Seasonal Data)
Secchi Disk Transparency and Chlorophyll *a* Data**



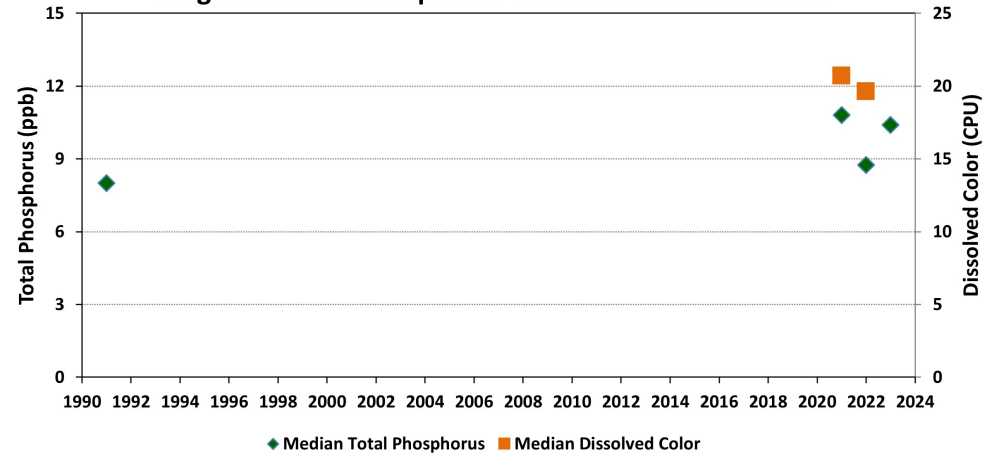
**Figure 3. Round Pond (2023 Seasonal Data)
Secchi Disk Transparency and Dissolved Color Data**



**Figure 4. Round Pond - Deep Site (1991-2023)
Long-term Secchi Disk Transparency and Chlorophyll *a* Data**



**Figure 5. Round Pond - Deep Site (1991-2023)
Long-term Total Phosphorus and Dissolved Color Data**



Figures 2 and 3. Seasonal comparison of Round Pond water transparency (Secchi Disk depth), chlorophyll *a* and dissolved color for 2023. Shallower water transparency measurements oftentimes correspond to increases in chlorophyll *a* and/or color concentrations.

Figures 4 and 5. Annual median Round Pond water transparency, chlorophyll *a*, dissolved color and total phosphorus concentrations measured between 1991 and 2023, through the New Hampshire Lakes Lay Monitoring Program (2021-2023) and the New Hampshire Department of Environmental Services (1991). The long-term data provide insight into the water quality fluctuations, among years, that have been documented in Round Pond.

Figure 6. Round Pond - Site Deep
Temperature Profiles (May 16 through October 17, 2023)

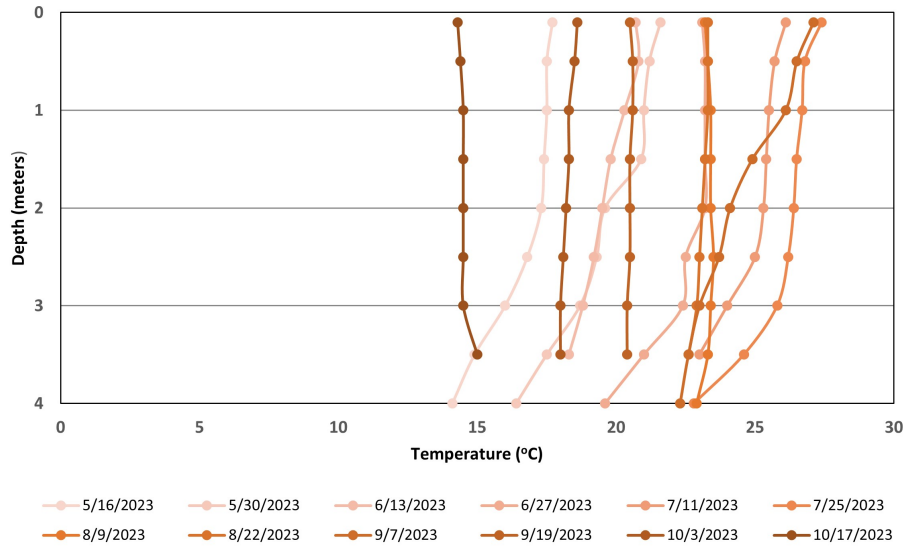


Figure 7. Round Pond - Site Deep
Dissolved Oxygen Profiles (May 16 through October 17, 2023)

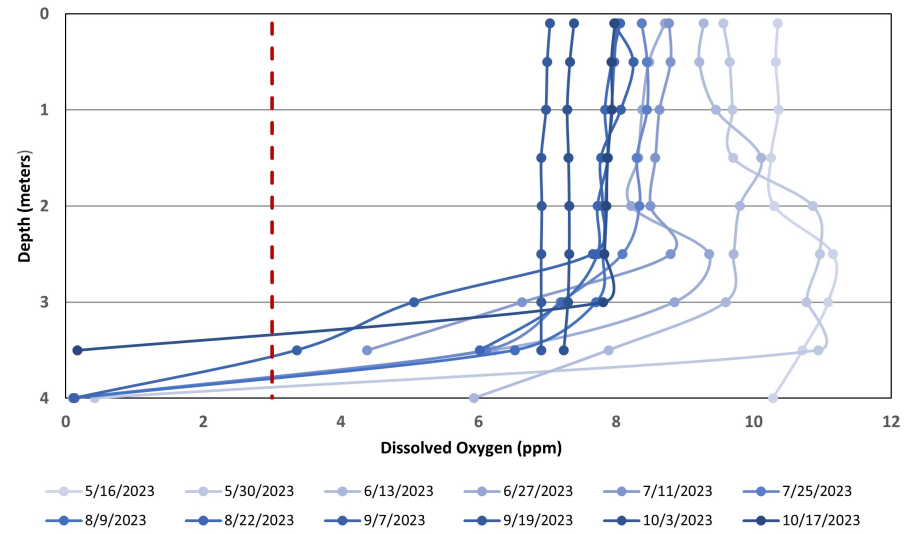


Figure 8. Round Pond - Site Deep
Total Phosphorus inter-comparison

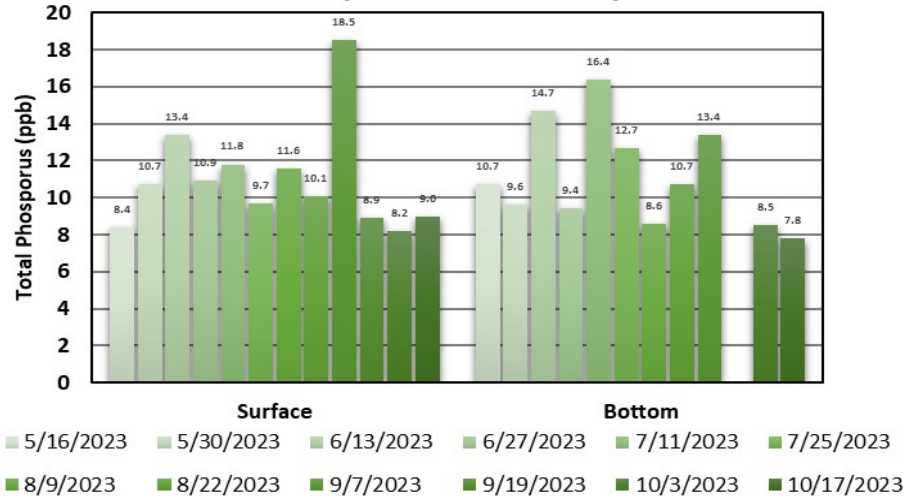
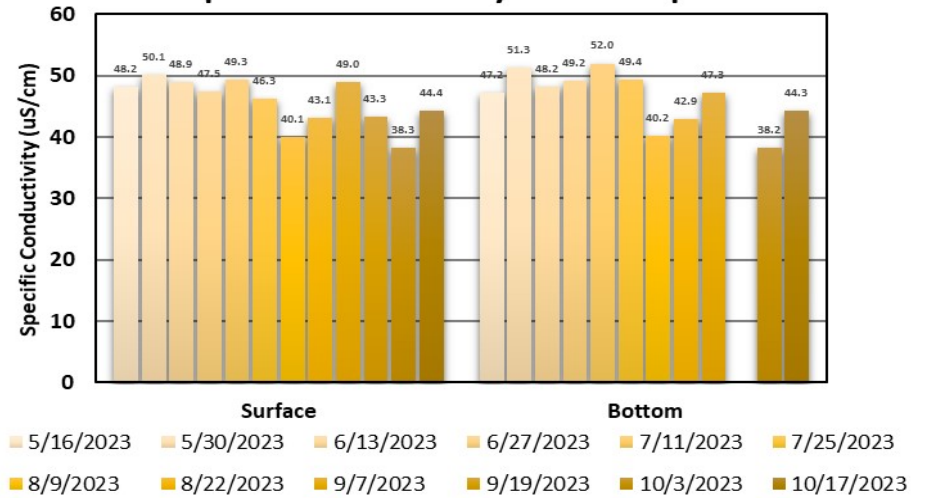


Figure 9. Round Pond - Site Deep
Specific Conductivity inter-comparison



Figures 6 and 7. Temperature and dissolved oxygen profiles displaying the water quality differences in 0.5-meter increments. The dashed vertical red line in Figure 7 displays the dissolved oxygen threshold for the successful growth and reproduction of warm-water fish such as bass and perch.

Figures 8 and 9. Total phosphorus and specific conductivity comparison between the surface (epilimnion) and bottom water (metalimnion) zones.

Table 3. Loon Lake and Round Pond inter-depth (2023 Data: bi-weekly sampling between May 16 and October 17)

Lake / Zone	Average (range) Total Phosphorus (ppb)	Average (range) Specific Conductivity (uS/cm)	Average (range) Total Alkalinity @ pH 5.2 (ppm)	Average (range) pH (standard units)
Loon Lake – surface composite (epilimnion)	13.1 ppb (range: 8.1 – 32.8)	53.9 uS/cm (range: 45.6 – 60.7)	6.8 ppm (range: 5.6 – 7.9)	7.1 std units (range: 6.6 – 7.6)
Loon Lake – surface zone (epilimnion)	10.9 ppb (range: 6.3 – 17.4)	53.9 uS/cm (range: 46.5 – 60.2)	6.5 ppm (range: 5.5 – 7.3)	7.2 std units (range: 6.7 – 7.6)
Loon Lake - mid-lake zone (metalimnion)	9.9 ppb (range: 6.4 – 14.7)	54.9 uS/cm (range: 48.3 – 60.5)	6.1 ppm (range: 5.6 – 6.8)	6.8 std units (range: 6.4 – 7.5)
Loon Lake – deep water zone (hypolimnion)	11.7 ppb (range: 6.8 – 19.3)	59.1 uS/cm (range: 52.4 – 69.0)	5.9 ppm (range: 4.6 – 6.8)	6.5 std units (range: 6.3 – 7.0)
Round Pond – surface composite (epilimnion)	10.9 ppb (range: 8.2 – 18.5)	45.7 uS/cm (range: 38.3 – 50.1)	3.9 ppm (range: 3.1 – 5.5)	6.9 std units (range: 5.9 – 6.5)
Round Pond – surface zone (epilimnion)	11.3 ppb (range: 6.8 – 36.6*)	45.2 uS/cm (range: 38.6 – 49.6)	4.0 ppm (range: 3.1 – 4.5)	7.1 std units (range: 6.8 – 7.7)
Round Pond – mid-lake zone (metalimnion/hypo)	11.1 ppb (range: 7.8 – 16.4)	46.4 uS/cm (range: 38.2 – 52.0)	4.5 ppm (range: 3.0 – 5.9)	6.9 std units (range: 6.5 – 7.6)

• Water quality summary statistics are reported for Loon Lake and Round Pond. Summary data are included for each of the three thermal zones (when applicable), as well as the epilimnetic surface composite samples. *Note: Round Pond becomes thermally stratified intermittently and does not develop a deep water (hypolimnion) zone.*

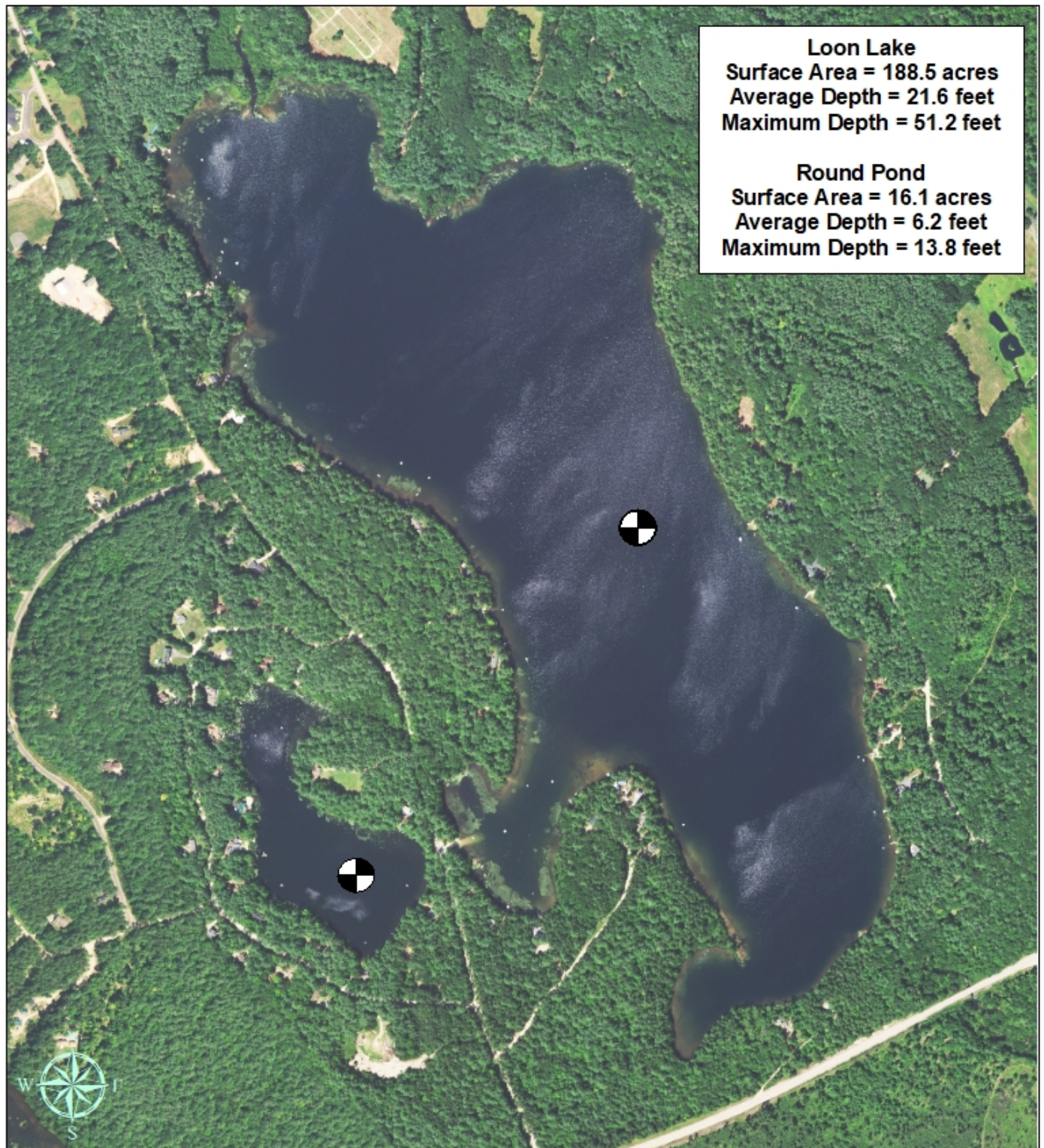
Data Interpretation: Overview of factors to consider when reviewing the Round Pond data

This highlight report provides a general overview of the current and historical conditions of Round Pond. The report is intended to provide a simple assessment of the water quality trends. Should you have additional questions about interpreting your water quality results, we would be happy to discuss the data with you and/or any concerns you may have. In general, some factors that influence the current and long-term water quality results/trends for our New Hampshire lakes and ponds include:

- **Land-use Patterns** within the watershed (drainage basin) – Research indicates land use patterns have an impact on how much phosphorus (nutrient) is washing into our lakes. In general, more urbanized watersheds have a greater degree of phosphorus runoff than highly forested/vegetated drainage areas.
- **Weather Patterns** – Rainfall and temperature can influence water quality. Wet periods, and overland runoff, tend to be a time when elevated nutrients and other pollutants are transported into our lakes. Temperature can also influence water quality conditions since many aquatic plants and algae tend to respond to changing seasonal conditions. Unusually warm periods are sometimes tied to short-term algal and cyanobacteria blooms.
- **Best Management Practices (BMPs)** – The presence/absence of best management practices can have an interplay on water quality. BMPs are measures that are used to manage nutrients and other pollutants that could otherwise make their way into our lakes. Properties that employ BMPs, designed specifically to remove pollutants of concern (e.g. sediments and phosphorus), are less likely to contribute nutrients and other pollutants into our lakes.
- **Temperature (Thermal) Stratification** – Many lakes become thermally stratified during the summer months and may form three distinct thermal layers: upper water layer (epilimnion), middle lake layer (metalimnion) and bottom cold-water layer (hypolimnion). These thermal zones form a barrier to lake mixing, during the summer months, and can coincide with differences in dissolved oxygen and specific conductivity through the water column (Figures 6, 7 and 9).
- **Internal Nutrient Loading** (nutrients that are introduced from the sediments along the lake bottom) – Some of our lakes experience significant internal nutrient loading. Such lakes generally tend to be well stratified and exhibit increasing deep water phosphorus concentrations, relative to surface levels, from May through September/October (Figure 8). Lakes that exhibit internal nutrient loading may also exhibit increasing deep water specific conductivity concentrations (a measure of dissolved materials) through the summer months (Figure 9).

Figure 10. Loon Lake and Round Pond

Freedom, NH
2023 deep sampling locations



0 0.1 0.2 0.3 0.4 Miles

Aerial Orthophoto Source: NH Grant, 2018 National Agriculture Imagery Program
GPS Coordinates collected by the UNH Center for Freshwater Biology



Extension

